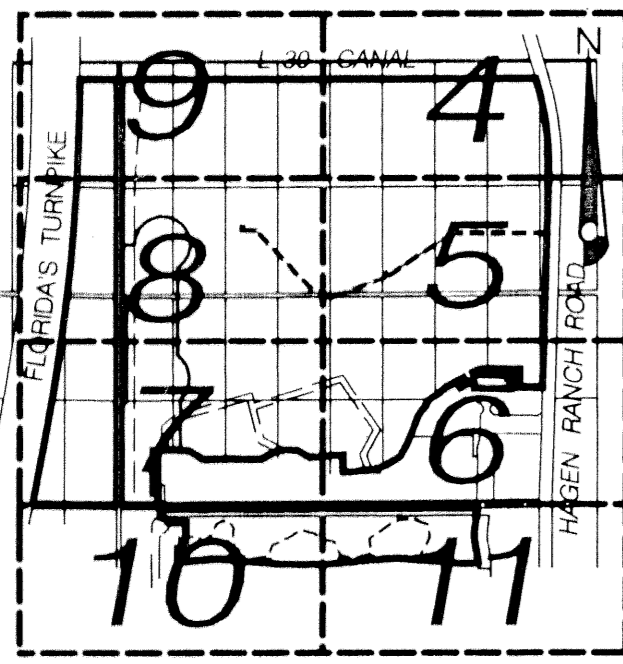


# POLO TRACE II GOLF COURSE

(A PART OF POLO TRACE II P.U.D.)

BEING A REPLAT OF A PORTION OF PALM BEACH FARMS COMPANY PLAT NO. 1,  
 ACCORDING TO THE PLAT THEREOF, AS RECORDED IN PLAT BOOK 2, PAGES 26 - 28,  
 ALSO BEING A REPLAT OF A PORTION OF POLO TRACE II, PLAT NO. 1  
 ACCORDING TO THE PLAT THEREOF, AS RECORDED IN PLAT BOOK 75, PAGES 193 - 204,  
 PUBLIC RECORDS OF PALM BEACH COUNTY, FLORIDA.

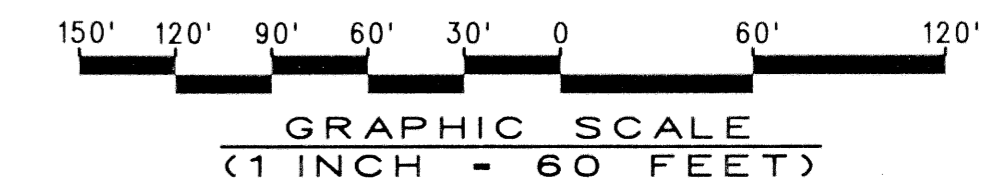
LYING IN SECTIONS 8 AND 9, TOWNSHIP 46 SOUTH, RANGE 42 EAST  
 PALM BEACH COUNTY, FLORIDA  
 JUNE, 2000 SHEET 11 OF 11



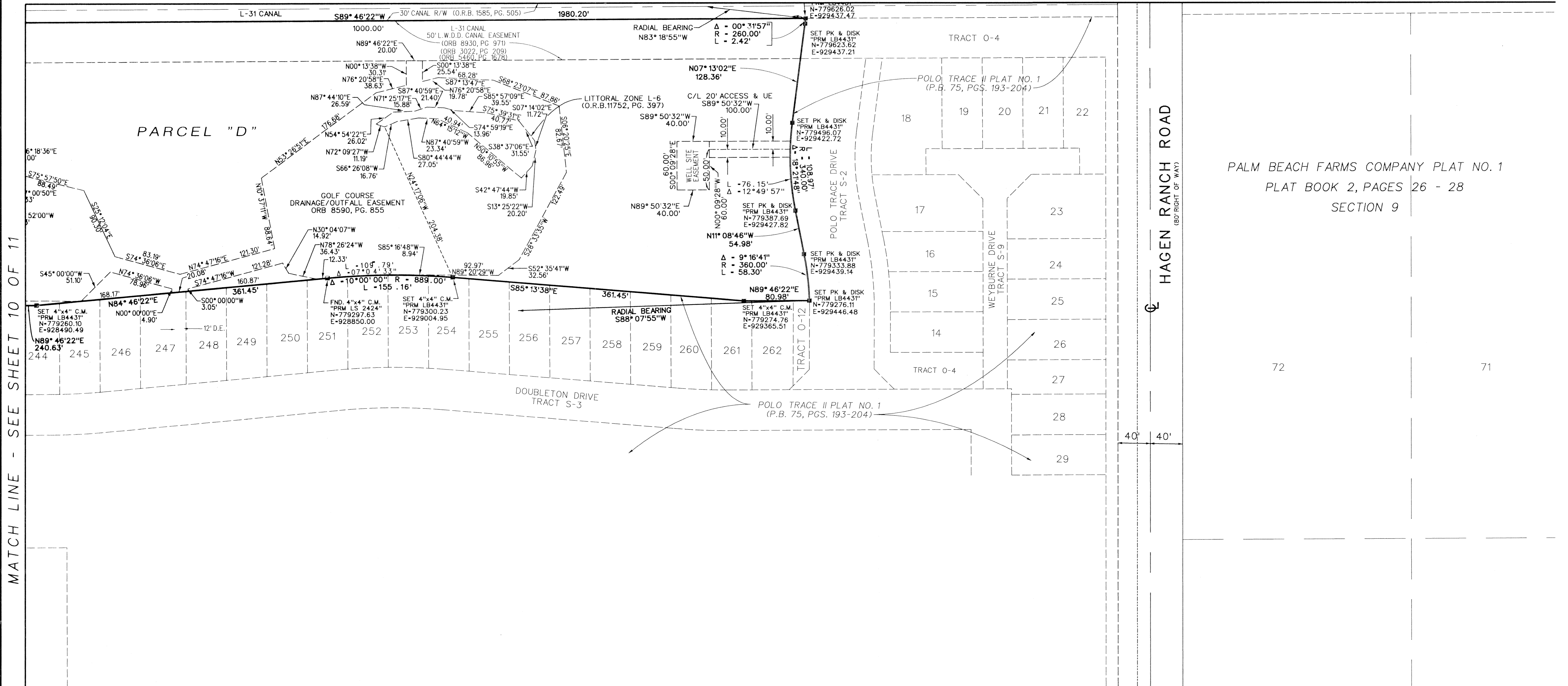
SHEET INDEX

0633-004

170



MATCH LINE - SEE SHEET 6 OF 11



MATCH LINE - SEE SHEET 10 OF 11

PALM BEACH FARMS COMPANY PLAT NO. 1  
 PLAT BOOK 2, PAGES 26 - 28  
 SECTION 9

POLO TRACE II  
 GOLF COURSE  
 PAGE 170  
 PLANNING P.U.D.  
 SHEET 11 OF 11  
 DATE 06/22/2000  
 DRAWN BY 459  
 CHECKED BY 459

ABBREVIATIONS:

C.M.	- CONCRETE MONUMENT
N.T.	- NON-TANGENT
O.R.B.	- OFFICIAL RECORD BOOK
P.B.	- PLAT BOOK
P.B.Co.	- PALM BEACH COUNTY
PG.	- PAGE
R.B.	- RADIAL BEARING
R/W	- RIGHT-OF-WAY
WMME	- WATER MANAGEMENT MAINTENANCE EASEMENT
W.M.T.	- WATER MANAGEMENT TRACT

**LIDBERG LAND SURVEYING, INC.**  
 675 West Indiantown Road, Suite 200,  
 Jupiter, Florida 33458 TEL: 561-746-8454

LB4431

CAD.	K:\USTATION\PLATS\75-193\GOLF\MAP_SH11.DGN
REF.	K:\USTATION\PLATS\75-193\GOLF\POLOBASE.DGN
FLD.	FB. PG. JOB 97-265(306)
OFF.	CASASUS DATE SEPT. 1998
CKD.	D.C.L. SHEET 11 OF 11 DWG. D97-265P